



PERETTI GROUP MAKES THE CRISTINA TANNERY EVEN MORE GREEN



OUR PROJECT

Since the 1950s the Cristina tannery, a part of Peretti Group, has made the innovation and sensitivity to the environment the cornerstones of its business, and has decided to further reduce its environmental impact, already contained by the use of state-of-the-art and latest generation systems.

The company, with its operational headquarters at Montebello Vicentino (VI), signed a ten-year Energy Performance Contract for the realization of the cogeneration electrical system by Alperia Bartucci, a leading company in the field of energy efficiency.

This electrical system which will deliver an electrical power of approximately 500 kW, allowing the production site to save approximately 2,600 MWh of electricity and 3,200 thermal MWh of heat produced by hot water and steam, essential components required for leather processing.

For the Peretti Group, being respectful of the environment is a mission that guides company choices and investments. For years, in fact, the Group has been provided with certifications and self-regulatory codes for the safety management and environmental matters and only uses electricity obtained entirely from renewable sources for all its production sites.

The Peretti Group continues the development of the project to offset its CO2 emissions.

Three thousand trees: a commitment that today goes beyond continuous energy efficiency projects and spasmodic attention to the most important good for the community, that is water.

Target: to create a green lung capable of absorbing more than 1,000 tons of CO2 over the next twenty years.

True sustainability: the "green lung" project is part of a very clear groove, the one that aims to demonstrate in a concrete and planning way that the tanning industry is sustainable. A non-stop green work in progress and an We will invest in human resources to be placed in research, quality and sustainability.

Further energy efficiency programs for which the necessary investments have already been approved will allow us to reduce our energy needs by around 25%.

We have in mind a whole series of research in the application field to reduce the consumption of chemical products and to develop new product lines, for this reason we decided to plant a few thousand trees in a land adjoining the tannery.

The idea of the wooded area will help us offset CO2 emissions. When the forest is 3-4 years old, we will come to contain about 20 tons of CO2 per year, according to the calculations made.

Sustainability has an inestimable value for us, thus our commitment to sustainability objectives aimed at reducing environmental impact is unceasing.

THE DEVELOPEMENT OF AN IDEA

1969

CONCERIA CRISTINA S.p.A.

CUTTING-EDGE MACHINERY AND PLANTS FOR PRODUCING MEDIUM-HIGH RANGE LEATHERS. WITH AN ELEVATED PRODUCTION CAPACITY AND SPEED IN ADJUSTING TO FASHION TRENDS, CONCERIA CRISTINA CAN PRODUCE EXTREMELY HIGH-QUALITY LEATHER IN LARGE QUANTITIES.

- furnishings
- leather goods
- footwear
- automotive

€ 94.000.000

34.800 sq m

5 million square feet per month

NUOVA GASBY S.p.A.

MARKET LEADER THANKS TO THE PRODUCTION OF CALFSKIN FOR WOMEN'S FOOTWEAR. NUOVA GASBY, WITH ITS CUTTING-EDGE TECHNOLOGY AND MODERN PROCESSING TECHNIQUES, CAN BOAST LEATHER PRODUCTION THAT BLENDS HIGH-QUALITY WITH RESPECT FOR THE ENVIRONMENT.

- leather goods
- footwear

€ 24.000.000

5.900 sq m

more than 800.000 square feet per month

1990

CONCERIA PERLA S.p.A.

LEATHER FOR QUALITY FURNISHINGS. CONCERIA PERLA IS PROUD TO HAVE LOYAL CUSTOMERS FROM INTERNATIONAL MARKETS.

- furnishings

30.000 sq m

5 million square feet per month

1992

INTER LEDER S.p.A.

SPECIALISED IN DYEING LEATHERS WITH OR WITHOUT USING CHROME, INTER LEDER IS CONSTANTLY COMMITTED TO IMPROVING QUALITY USING CUTTING-EDGE PRODUCTION TECHNOLOGY.

- furnishings

8.000 sq m

5 million square feet per month

1999

SOAVE PELLI S.p.A.

LEATHER FOR THE AUTOMOTIVE AND FURNISHINGS SECTORS. EQUIPPED WITH CUTTING-EDGE MACHINERY, SOAVE PELLI IS CHARACTERISED BY ITS HIGH LEVEL OF PRODUCTION THAT CAN SATISFY THE REQUIREMENTS OF SELECTIVE AND PRESTIGIOUS EUROPEAN AND AMERICAN CLIENTS.

- furnishings
- automotive

4.800 sq m

more than 3 million square feet per month

2010

JUST IN TIME

WAREHOUSE FACILITY IN NORTH CAROLINA (USA) THAT UTILIZES THE "JUST IN TIME" PHILOSOPHY TO GUARANTEE SERVICE THAT MATCHES THE HIGHEST EXPECTATIONS. **TIGER LEATHER** HAS MORE THAN 150 COLOURS AND STYLES IN STOCK THAT ARE READY FOR PROMPT DELIVERY.

2018

CONCERIA MIURA S.r.l.

A COMPANY SPECIALIZED IN THE CALFSKIN PRODUCTION FOR LUXURY LEATHER AND FOOTWEAR IN THE WORLD. COMPLETES VERTICALLY THE OFFER OF THE GROUP PRESENT IN THIS WAY IN ALL THE SEGMENTS OF THE FASHION.

THE GRUPPO PERETTI, THANKS TO THE DYNAMIC MANAGEMENT OF ITS PRODUCTION AND AN EFFICIENT ADMINISTRATION NETWORK, IT SUCCESSFULLY TAKES CARE OF THE ENTIRE TANNING CYCLE: FROM THE PURCHASE OF CAREFULLY SELECTED RAW MATERIALS TO THE HIGHLY SPECIALISED MANUFACTURE OF PRODUCTS THAT ANSWER THE DEMANDS AND TECHNICAL REQUIREMENTS OF THE MARKET. CONTINUING IN THE OPPORTUNITY OF THE GROWTH / EXPANSION AND MAINTAINING THE IDENTITY OF THE PERETTI FAMILY.

TODAY



OUR CERTIFICATIONS

UNI EN ISO 9001 -QUALITY MANAGEMENT SYSTEM CERTIFICATION

(expiry date 30/09/22) - Progettazione e produzione pelli per calzatura, pelletteria, automotive, arredamento e abbigliamento

Sede operativa: via Fracanzana 10, Montebello Vic.no (Vi) - Italy

Unità Calce e Concia: via della concia 57, Arzignano (Vi) – Italy

Unità rifinitura, scelta in finito, misurazione e imballo: via dell'industria 6, Soave (Vr)

LEATHER LABORATORY ICEC TS-406 CERTIFICATION

(expiry date 13/05/2023) - Conformità ai requisiti della specifica tecnica ICEC 406 rev. 04 21.11.12 "Requisiti e criteri di qualifica per laboratori di prova"

Sede operativa: via Fracanzana 10, Montebello Vic.no (Vi) – Italy

LWG GOLD RATED (Category D)

(expiry date 27/11/2022) - Sede operativa: via Fracanzana 10, Montebello Vic.no (Vi) – Italy

Traceability Rating: 89.43%

LWG SILVER RATED (Category A)

(expiry date 25/11/2022) - Unità Calce e Concia: via della concia 57, Arzignano (Vi) – Italy

Traceability Rating: 98.88%

PRODUCT CERTIFICATION ITALIAN ORIGIN LEATHER

(expiry date 02/10/2022) - Conformità requisiti Norma UNI EN 16484

Sede operativa: via Fracanzana 10, Montebello Vic.no (Vi) – Italy

LWG SILVER RATED (Category D)

(expiry date 24/05/2023) - Gruppo Peretti SpA – Div. Miura – via del Trebbio Nord 41, Santa Croce sull'Arno (Pi), Italy

Traceability Rating: 95.94%



A WOOD THAT IS REBORN



REFORESTATION INTERVENTION

Reforested area: 40,000 square meters

Plants planted: over 2,200 plants including specimens of Oak, Wild Cherry, Linden, Elm, Sycamore, Ash, Poplar, Hazel, Lantana, Viburnum, Privet.

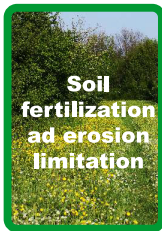
Works start: 10 January 2020

Companies involved:



PLANT FOR THE FUTURE

Trees play a crucial role in the water cycle. They are essential to provide us with food, however support our economies, keeping us alive. sig now and in the future.



TREES AS CARBON SINKS

In plants such as the one made by Conceria Cristina s.p.a. has been demonstrated as the quantity of CO₂ (carbon dioxide) and carbon dioxide organic present in the soils two years after afforestation increases of about 20%, reducing CO₂ emissions, in atmospheres.

To this CO₂, stored in the soil, is added the CO₂, stored in plant wood: scientific research has established that a plants arborea, every year, stores from 20 to 30 kg of CO₂ in the wood; whereas the Conceria Cristina plant has about 2240 plants arboreal, in 1 year the quantity of CO₂ stored in the wood is about 60 tons of CO₂ equivalent, while, over 20 years, will be of about 1200 tons of CO₂, equivalent.



Cristina tannery, which is a part of the Peretti Group, has been an Italian and international reference for the tanning sector since the 1950s, distinguishing itself for a constant improvement in quality and reliability, with deep respect for the environment.

The present offer has developed the preliminary economic and technical feasibility to equip the production site of Montebello Vicentino (VI) with a system for the production of electrical and thermal energy by means of an internal combustion engine in cogeneration.

The aims of the new system proposed will be:

- **Reduction of Energy Consumption and monitoring of savings**
- **Improvement of the quality and management of energy vectors**
- **Energy and environmental sustainability**
- **Guarantee of operation and continuity of the service**

The Cogeneration System in container configuration consists of:

- **Endothermic engine** fueled by methane gas, with nominal electric power 525 kW
- Flue gas heat recovery module for the production of hot **water / steam**
- Exchangers with heat recovery from the engine for the production of **hot water**
- Cooling system (aftercooler)
- Fumes Line Muffler and Silencer
- Power / LV parallel and control panels
- Allacciamento all'impianto elettrico ed idraulico del cliente (including the connection to the gas line)
- Supervision and control system

The cogenerator works with **electric tracking**: the motor follows the electric consumption and adapts by modulating the load up to a minimum of **50% of the nominal power**.
No electricity is fed into the grid.

Any MT line and all civil works related to the Cogenerator are excluded from the supply

**IN 2019 THE PERETTI GROUP REPLACED THE MERCURY VAPOR
AND METALLIC HALIDE LAMPS WITH LED LIGHTING**

SAVINGS IN WATT, SOAVE PLANT

**69 LAMPS REPLACED, REDUCING THE ANNUAL CONSUMPTION
FROM 28,080 WATTS TO 12,516 WATTS**

SAVINGS IN WATT, ARZIGNANO PLANT

**153 LAMPS REPLACED, REDUCING THE ANNUAL CONSUMPTION
FROM 24,520 WATTS TO 10,781 WATTS**

SAVINGS IN WATT, MONTEBELLO PLANT

**216 LAMPS REPLACED, REDUCING THE ANNUAL CONSUMPTION
FROM 65,800 WATTS TO 29,058 WATTS**



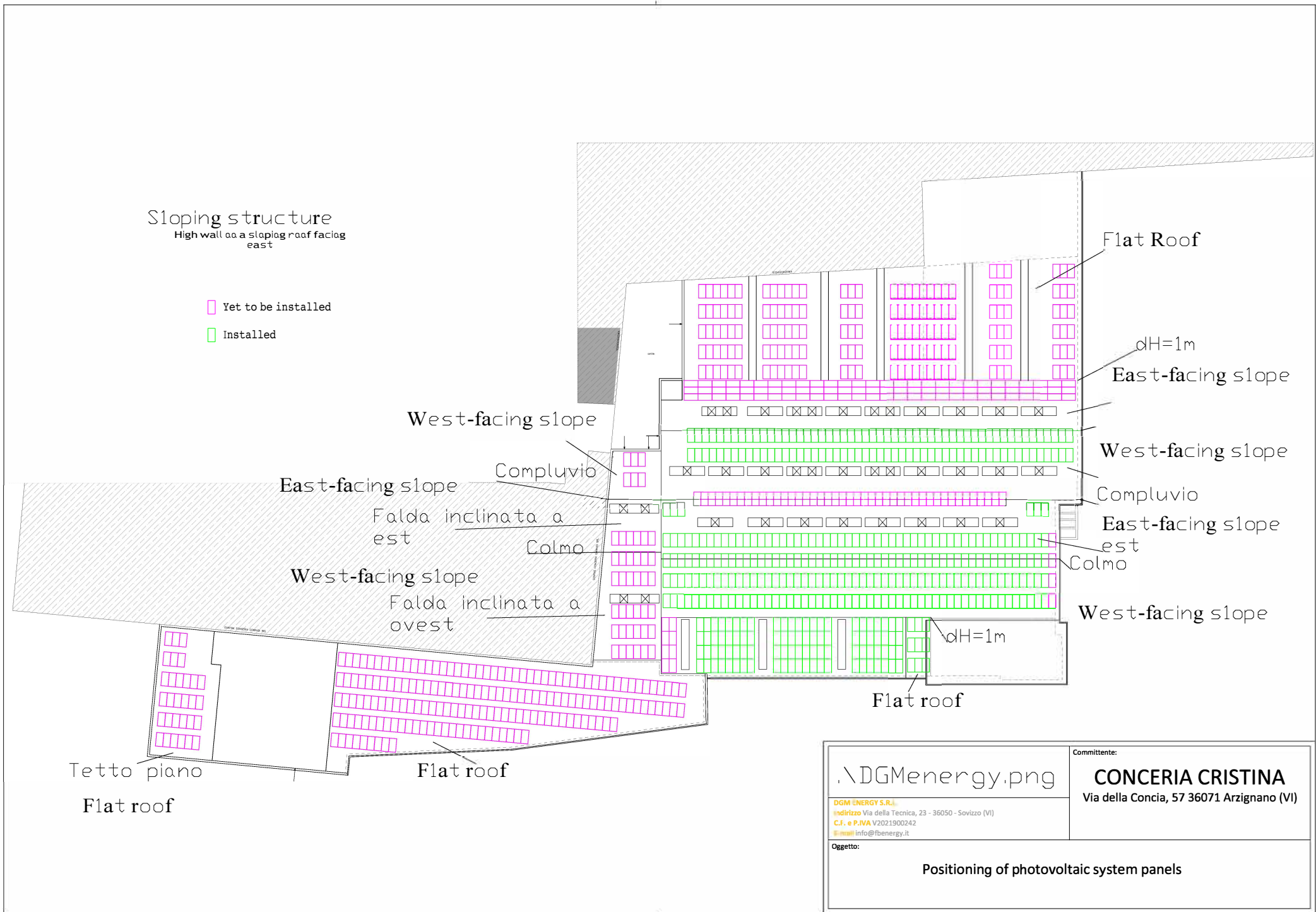
**NEW
STANDARD
5 BUSBAR**



FU 340 / 350 / 360 / 370 / 375 / 380 M
Monocrystalline photovoltaic module - 72 cells

Engineered
in Italy





10,64KWP PHOTOVOLTAIC SYSTEM PANELS WITH 28 380WP PHOTOVOLTAIC MODULE



CONCERIA CRISTINA Spa
Via Fracanzana, 10
36054 Montebello Vicentino (VI)



COMMITTENTE:

CONCERIA CRISTINA Spa

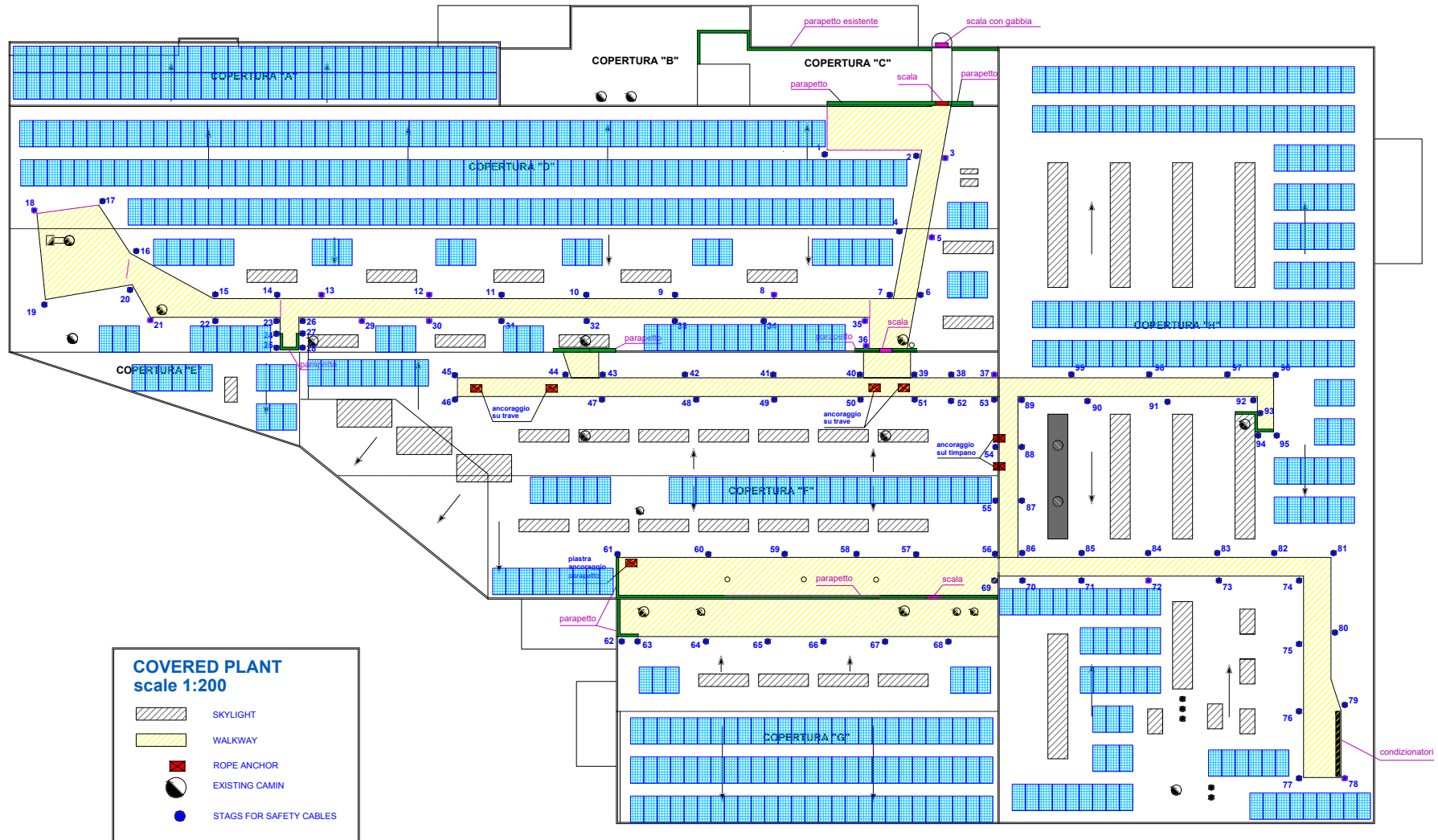
PROGETTO:
IMPIANTO FOTOVOLTAICO
Via Vigazzolo, 2, Montebello Vicentino.

PRIMA EMISSIONE:
____/____/____

OGGETTO:
DISPOSIZIONE MODULI FOTOVOLTAICI

VERIFICATO DA:
____-____-____

300,84 kWp PHOTOVOLTAIC SYSTEM PANELS WITH 654 / 460Wp MODULES



GRUPPO PERETTI Spa



COMMITTENTE:

NUOVA GASBY

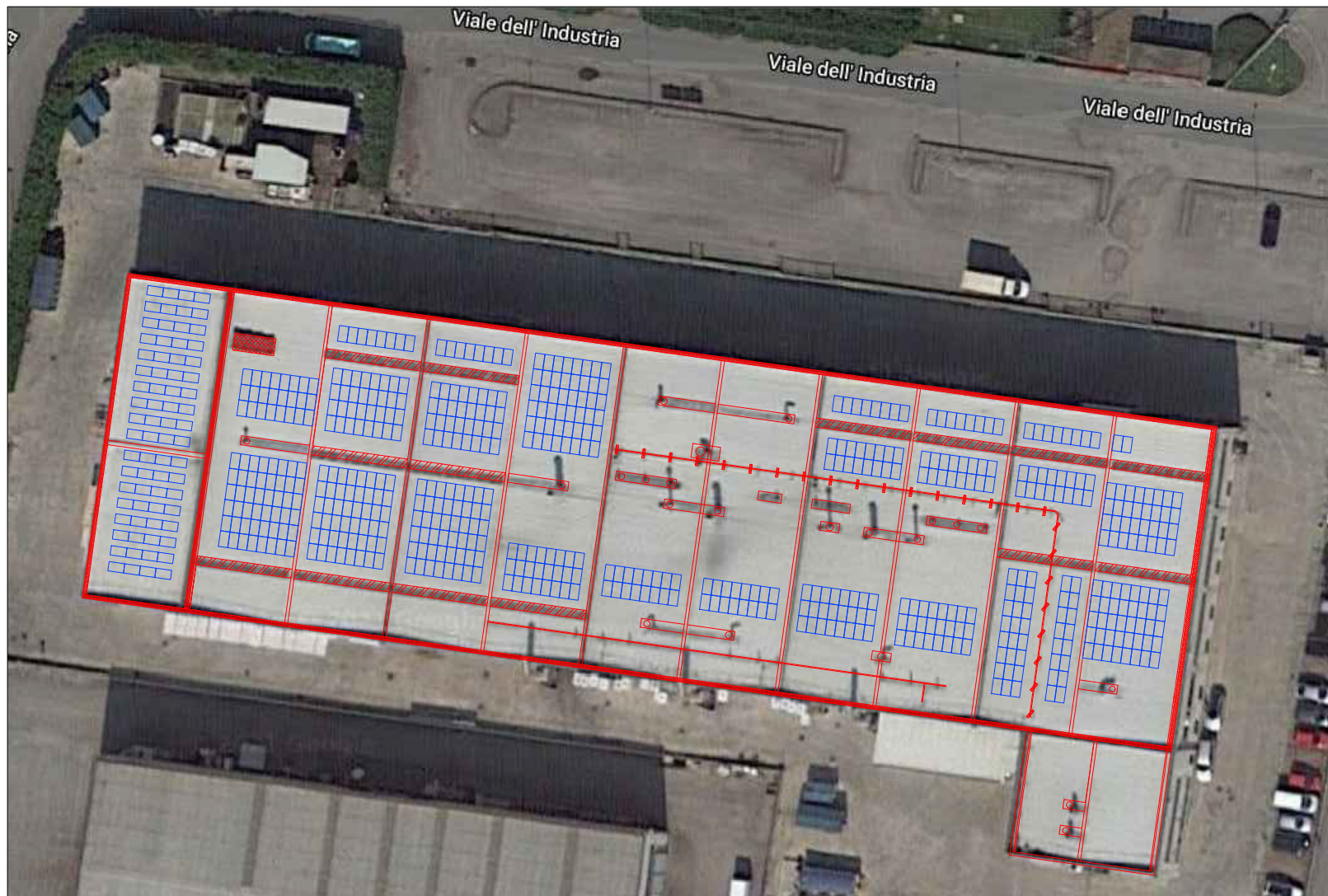
PROGETTO:
IMPIANTO FOTOVOLTAICO
Via della Concia, 140, 36071 Arzignano (VI)

PRIMA EMISSIONE:

OGGETTO:
DISPOSIZIONE MODULI

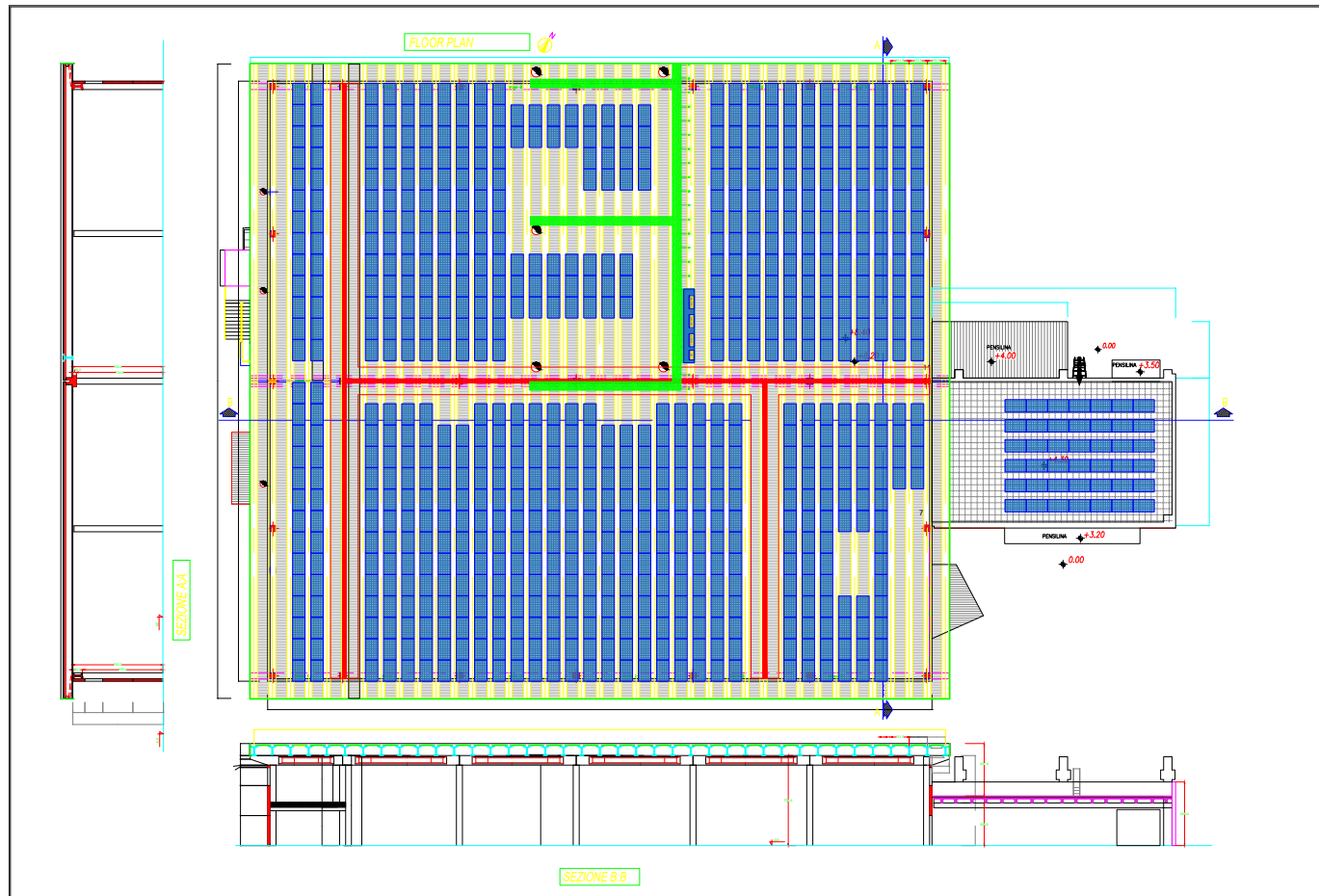
VERIFICATO DA:

250KWP PHOTOVOLTAIC SYSTEM WITH 658 PHOTOVOLTAIC MODULES OF 380WP



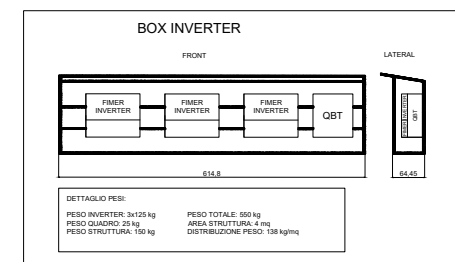
CONCERIA CRISTINA Spa Via Fracanzana, 10 36054 Montebello Vicentino (VI)		 Via Adige, 40 36010 MONTICELLO CONTE OTTO (VI)
COMMITTENTE: CONCERIA CRISTINA Spa		
PROGETTO: IMPIANTO FOTOVOLTAICO Viale dell'Industria, 6, Soave, VR.		PRIMA EMISSIONE: ___/___/___
OGGETTO: DISPOSIZIONE MODULI E RAPPRESENTAZIONE STRINGHE		VERIFICATO DA: -----

284,62 kWp
 PHOTOVOLTAIC
 SYSTEM WITH 749
 PHOTOVOLTAIC
 MODULES OF 380Wp



LEGENDA	
	PHOTOVOLTAIC MODULE
	PHOTOVOLTAIC INVERTER
	WALL PROTECTION DISTANCE 1 METER
	INSPECTION WALKWAY
	CAMIN

WHEIGHT PHOTOVOLTAIC MODULES
WHEIGHT SINGOL MODULE: 20 kg
AREA: 1,87 mq DISTRIBUZIONE PESO: 11 kg/mq
TOTAL WHEIGHT 749 MODULES: 14980 kg



ERREBI AMBIENTE
 Via Adige, 40
 36010 MONTICELLO CONTE OTTO (VI)

COMMITTENTE:
CONCERIA MIURA S.r.l.

PROGETTO:
**IMPIANTO FOTOVOLTAICO in Via del
 Trebbio Nord, 41, Santa Croce sull'Arno (PI)**

PRIMA EMISSIONE:
 26/05/2022

OGGETTO:
**DISPOSIZIONE MODULI ED INVERTER
 IMPIANTO FOTOVOLTAICO**

VERIFICATO DA:

Mario

SOLAR PANELS BENEFITS

Description	Soave	Vigazzolo	Montebello	Miura
Peak Power Installable	255 kW	11,3 kW	805 kW	287 kW
Annual producibility	1118 kWh/kWp	1150 kWh/kWp	1150 kWh/kWp	1250 kWh/kW
Total Electricity Produced	285.090 kWh	12.995 kWh	925.750 kWh	344.000 kWh
Potential Absorption of the Site	80%	85%	81%	80%
Number of photovoltaic modules *	680	30	2120	755
Tons of CO2 / saved per year	87,84	4,00	285,23	94,00

* Single panel power 375 Wp

** Transformation coefficient equal to 0.0003081 ton CO2 / kWh, Ispra 2019 data



Plant Soave

Power: 255 kW

Annual prod.: 1118 kWh/kWp

Total Electricity: 285.090 kWh

Photovoltaic Modules: 680

Tons of CO2 saved per year: 87,84

The leather you love loves the environment.



Plant Vigazzolo

Power: 11,3 kW

Annual prod.: 1150 kWh/kWp

Total Electricity: 12.995 kWh

Photovoltaic Modules: 30

Tons of CO2 saved per year: 4,00

The leather you love loves the environment.



Plant Montebello

Power: 805 kW

Annual prod.: 1150 kWh/kWp

Total Electricity: 925.750 kWh

Photovoltaic Modules: 2120

Tons of CO2 saved per year: 285,23

The leather you love loves the environment.



Plant Miura

Power: 287 kW

Annual prod.: 1250 kWh/kWp

Total Electricity: 344.000 kWh

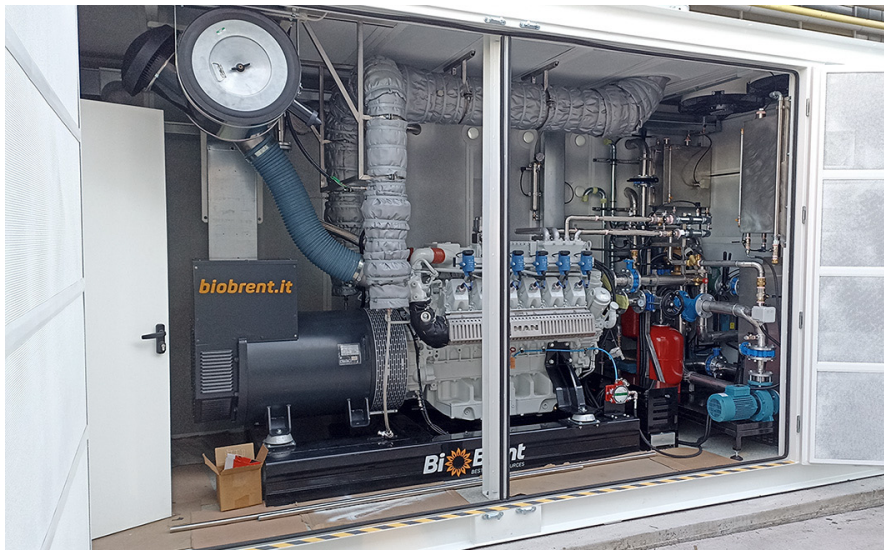
Photovoltaic Modules: 755

Tons of CO2 saved per year: 94,00

The leather you love loves the environment.



NEW COGENERATION PLANT FOR CRISTINA TANNING INDUSTRY



- The New Cogeneration System in container configuration is composed of:
- Endothermic engine powered by methane gas, with a nominal electric power of 500 kW
- Heat recovery module from exhaust gases for the production of hot water/steam
- Heat exchangers with heat recovery from the engine for the production of hot water
- Cooling system (aftercooler)
- Exhaust and Silenced Muffler
- Power/Parallel electrical panels in BT and control
- Connection to the customer's electrical and hydraulic systems (including connection to the gas line)
- Supervision and control system

The cogenerator operates in electric tracking: the engine follows the electric consumption and adapts by modulating the load down to a minimum of 50% of the nominal power.

The plant, which will produce an electrical power of about 500 kW, will allow the production site to save about 2,600 MWh of electrical energy and 3,200 MWh of thermal heat produced by hot water and steam, components for the processes necessary for the processing of hides.

NEW ELECTRIC FORKLIFTS



We have replaced all diesel-powered forklifts with electric ones.

NEW HAIR SEPARATION SYSTEM



New system for separating hair from leathers, this optimization process allows us to use less water and fewer chemicals in the lime and tanning phase.



NEW PACKAGING MATERIAL

CERTIFICATE of conformity

Spett.le: CONCERTIA CRISTINA SPA
Via Fracanzana Nr. 10
36054 Montebello Vicentino
Vicenza - Italy

With this certificate, it is attested that the stretch film:

AST30B160916000043 - FILM STRETCH AUTOMATIC STANDARD 30 MV - PCR 50% -
COLOR WHITE - STRIP 500 MM - INN. DIAM. 77 MM - TUBE GR.1800 - "GROSS WEIGHT OF THE BOBINE"
KG.16 - NR. 46 BOBINE/PALLET;

is made with more than 50% of certified "Second Life Plastic" polyethylene

PCR pellets are obtained by using recycled plastics from industrial waste.

Italian Plastic Institute Srl, through certification no.131/2019, attests that polyethylenes obtained
from the use of recycled materials comply with the requirements specified in the "Second Life Plastic"
certification regulation.

Chiari (BS), 16/01/2023

Ge-Tra-Pack Srl
a Socio Unico

A blue ink signature of the representative of Ge-Tra-Pack Srl, written over a horizontal line.

To reduce the environmental impact of our packaging, we have decided to use this product.

#016

Liquid waste treatment platforms

Venza

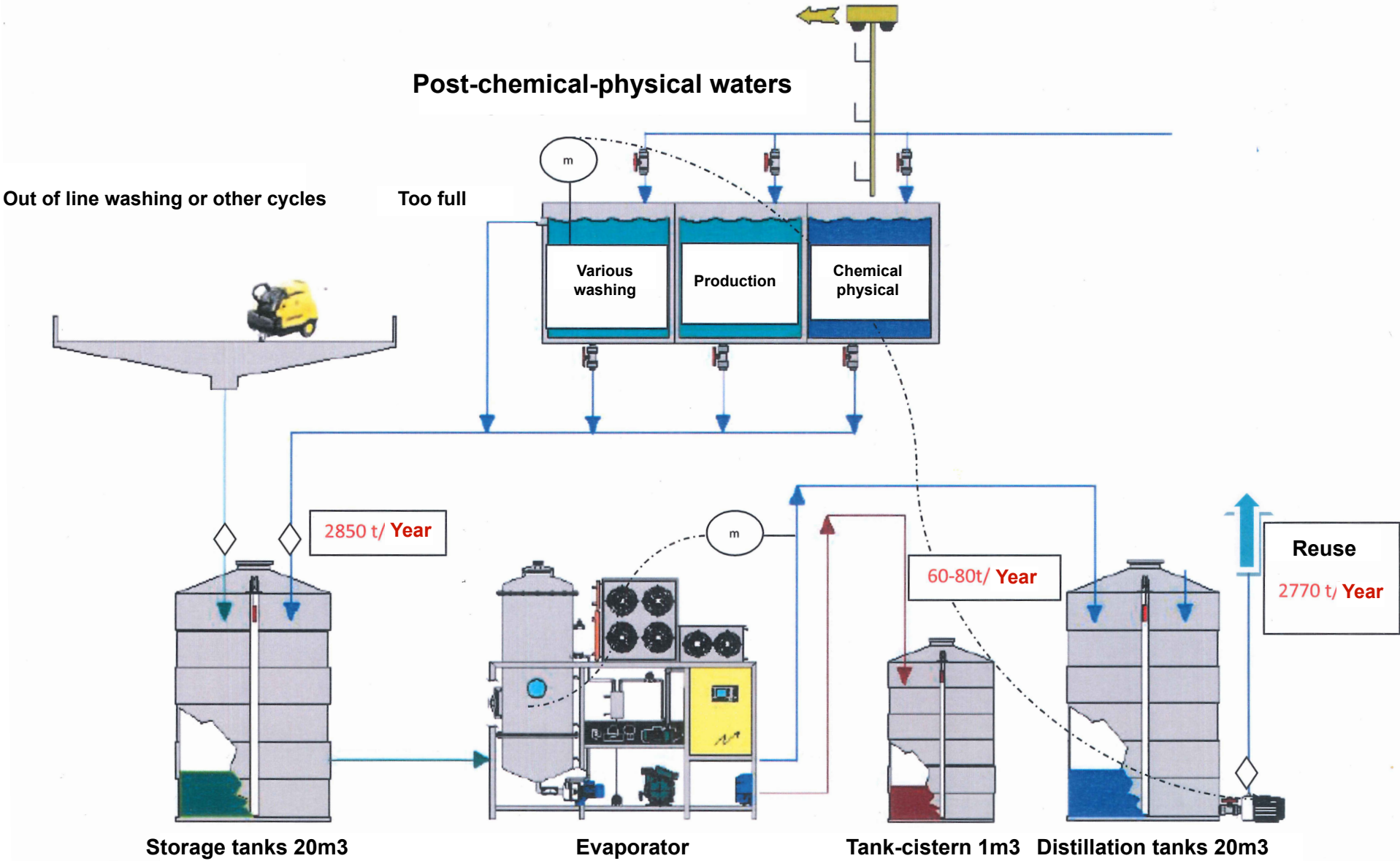
A highly efficient business

#rifutiliquidi #acqueindustriali
#evaporazione #efficienzaidrica
#efficienzaenergetica

Industries: liquid waste treatment



Together with the University of Padua, we have studied and implemented the prototype of the treatment of liquid finishing waste that allows us to reuse 97% of the water, while the solid residue, after being centrifuged, becomes usable material as fuel in blast furnaces to produce cement.



PERETTI GROUP MAKES THE CRISTINA TANNERY EVEN MORE GREEN

Divisione
Cristina

Divisione
Gasby

Divisione
Mura

gruppo
peretti
GP

www.gruppoperetti.com

